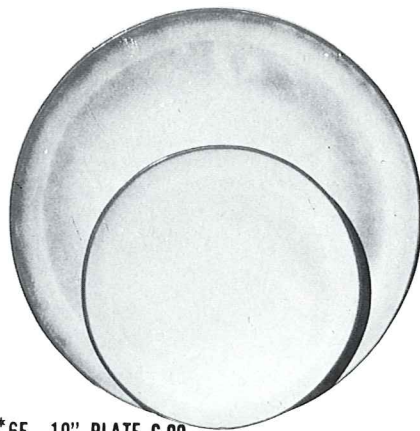


4K—BUTTER DISH
6.50



*6F—10" PLATE 6.00

*6G—7" PLATE 3.50



6B—SUGAR WITH LID
5.00

6AB—CREAM & SUGAR SET
8.00



6A—9 OZ. CREAMER
3.25

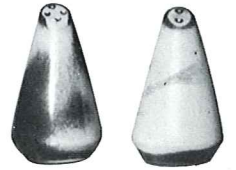


6U—18 OZ. BAKER FOR TWO
A COVERED CANDY DISH 6.50



*6C—CUP 3.25

*6E—5" WELLED SAUCER 2.75



6H—SALT & PEPPER
4.75



6VS—1½ QT. BAKER 9.25
6VS/W BAKER & WARMER SET 16.50



5LC—6 OZ. JUICE 3.25



5L—12 OZ.
TUMBLER
3.75



81—1 QT. PITCHER 6.50



249 TACO HOLDER
BOXED 2 PER BOX 10.00
Not Available in Flame



6V—2½ QT. BAKER 13.25
6V/W BAKER & WARMER SET 20.50



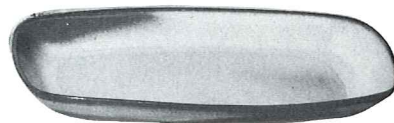
6T—6 CUP TEAPOT 9.25



80—2 QT. PITCHER 9.25



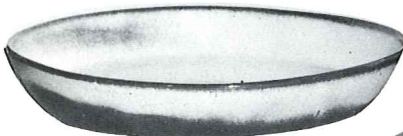
6J—2 CUP TEAPOT
6.50



5QS—13" STEAK PLATE (SHALLOW PLATTER) 5.00

6P—11" STEAK PLATE 4.50

5PS—9" TRAY 3.75



91—10" BAKING DISH
4.75



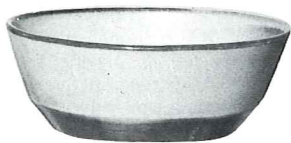
XO—3 OZ.
SINGLE SERVING
BOWL 1.50



242
2.50 CORN DISH



243—6½" CRESCENT SALAD
2.50



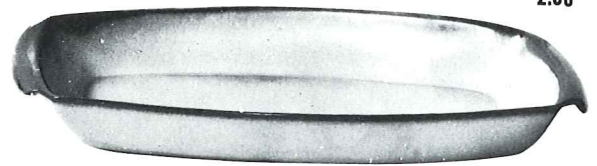
6N—1 QT. BOWL
4.75



6X—14 OZ. CHILI SOUP 3.25
6XS—10 OZ. FRUIT 2.75

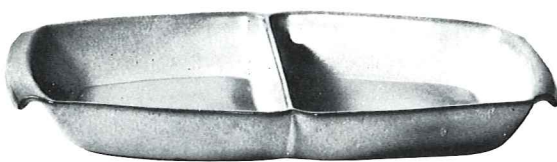


6S—2 SPOUT GRAVY
6.50



17.50
5P—17" DEEP PLATTER

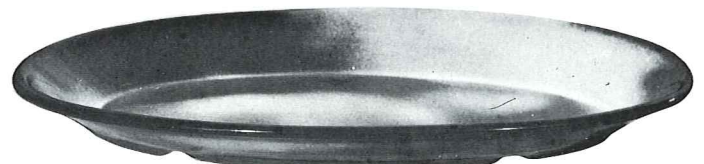
7.75
5Q—13" DEEP PLATTER



5QD—13" DIVIDED BOWL
7.75



BP—6 OZ. BEAN POT
OR CUSTARD
2.75



TP—17" OVAL PLATTER
17.50

THIS PAGE AVAILABLE IN 10 STANDARD COLORS PLUS COFFEE BROWN AND NAVY BLUE — EXCEPT WHERE NOTED. ADD 50% FOR FLAME.

* Not Available in Desert Gold, Brown Satin, Coffee Brown and Flame